

# **Fresno Regional Workforce Development Board**

*A proud member of America's Job Center of California<sup>SM</sup> Network*

2125 Kern Street, Suite 208 • Fresno, California 93721 • 559.490.7100 • Fax 559.490.7199 •  
www.workforce-connection.com

---

*Blake Konczal, Executive Director*

## **OPERATIONAL DIRECTIVE**

**FRWDB OD # 28-04, Revision C**

**Date Released: October 11, 2017**

**To: All Fresno Regional Workforce Development Board Providers of Services**

**From: Blake Konczal, Executive Director**

**Effective Date: October 11, 2017**

**Subject: Reactive Rapid Response Services Process Flow**

**Applicable Program: Dislocated Worker**

**Revision History: Initial Release – 10/6/04; Revision B – 10/7/15**

This Revision C removes state survey requirement (no longer required), updates position titles and corrects Applicable Program error.

This Operational Directive (OD) references OD 12-15, WIOA Adult Customer Flow and OD 51-08, Rapid Response Dislocated Worker Eligibility.

Under certain conditions, FRWDB providers of services staff and One-Stop partner staff will be asked to provide temporary assistance to facilitate this activity, under the leadership of FRWDB Rapid Response staff.

Rapid Response is a business-focused and flexible strategy designed to respond to layoffs and plant closings by quickly coordinating services and providing immediate aid to companies and their affected workers. Rapid Response teams will work with employers and any employee representative(s) to quickly maximize public and private resources to minimize disruptions associated with job loss. Rapid Response can provide customized services on-site at an affected company, accommodate any work schedules, and assist companies and workers through the painful transitions associated with job loss.

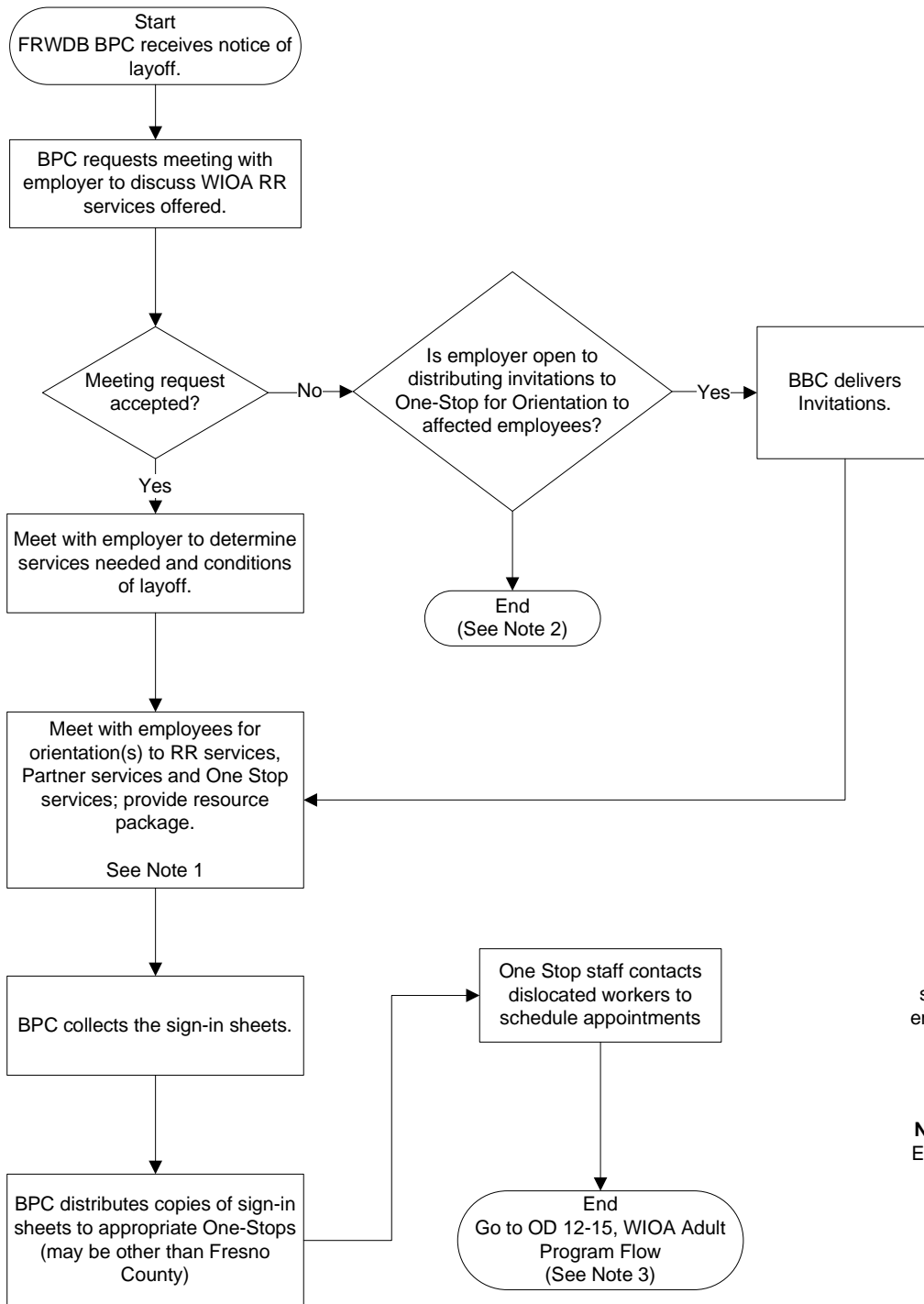
If the dislocated worker hasn't enrolled into WIOA within 90 days of the initial Rapid Response orientation or did not attend a Rapid Response Orientation, they will be required to attend another orientation through the One-Stop.

The FRWDB Business Program Consultant (BPC) will track Rapid Response activities using EDD Form 121 and 122.

The process flow is depicted on Page 2.

If any questions, contact the FRWDB BPC.

**Process Flow:**



Note 1: Sign-in Sheet required.

**Note 2:** BPC develops strategies to inform affected employees without assistance of Employer

**Note 3:** See OD 51-08 for Eligibility Criteria for Rapid Response Dislocated Workers