

Fresno Regional Workforce Development Board

A proud member of America's Job Center of CaliforniaSM Network

2125 Kern Street, Suite 208 • Fresno, California 93721 • 559.490.7100 • Fax 559.490.7199 •
www.workforce-connection.com

Blake Konczal, Executive Director

OPERATIONAL DIRECTIVE

FRWDB OD # 15-08, Revision C

Date Released: April 19, 2018

To: All Fresno Regional Workforce Development Board Providers of Services

From: Blake Konczal, Executive Director

Effective Date: April 19, 2018

Subject: Special Grants Fast Track Customer Flow

Applicable Program: As specified by FRWDB staff

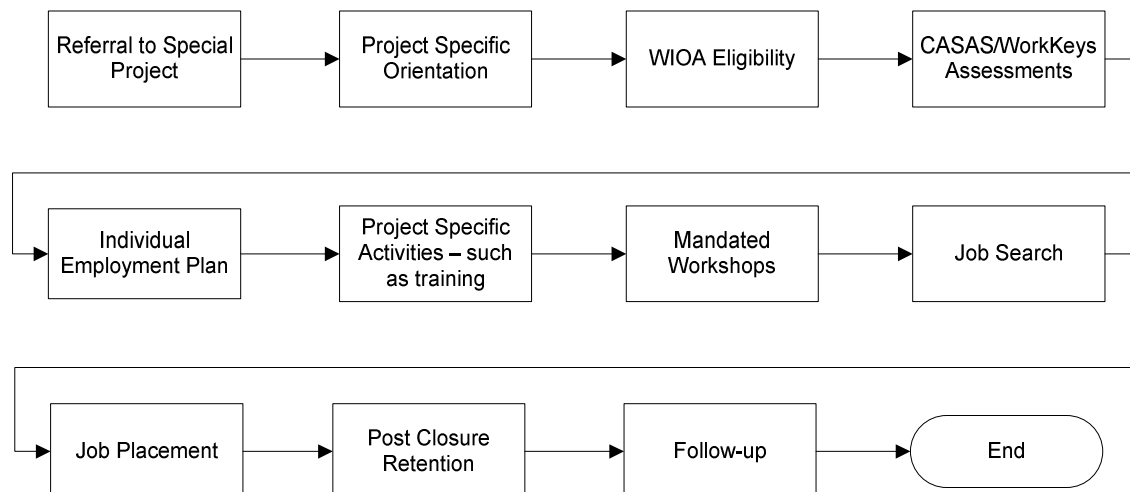
Revision History: Initial Release – 4/2/08; Rev B – 6/27/17

This Revision C updates the fast track customer flow to be followed at the direction of FRWDB management for use with special grants/projects that target specific populations and/or conditions.

Recruitment documents (flyer, etc.) will be developed for each grant/project that will identify any special eligibility requirements, targeted population(s), assessment requirements, and any other special processes.

Any specific data entry or enrollment requirements, such as grant codes or service codes will be provided in an Information Bulletin.

Fast Track Customer Flow:



Unless specified in an IB, the following processes will be waived under the Fast Track customer flow:

- Job Track,
- O*Net assessment,
- SRT,
- Scholarship Panel and School Visits,
- Career Track, and
- Job Ready Portfolio

If any questions, contact the FRWDB Program Manager.